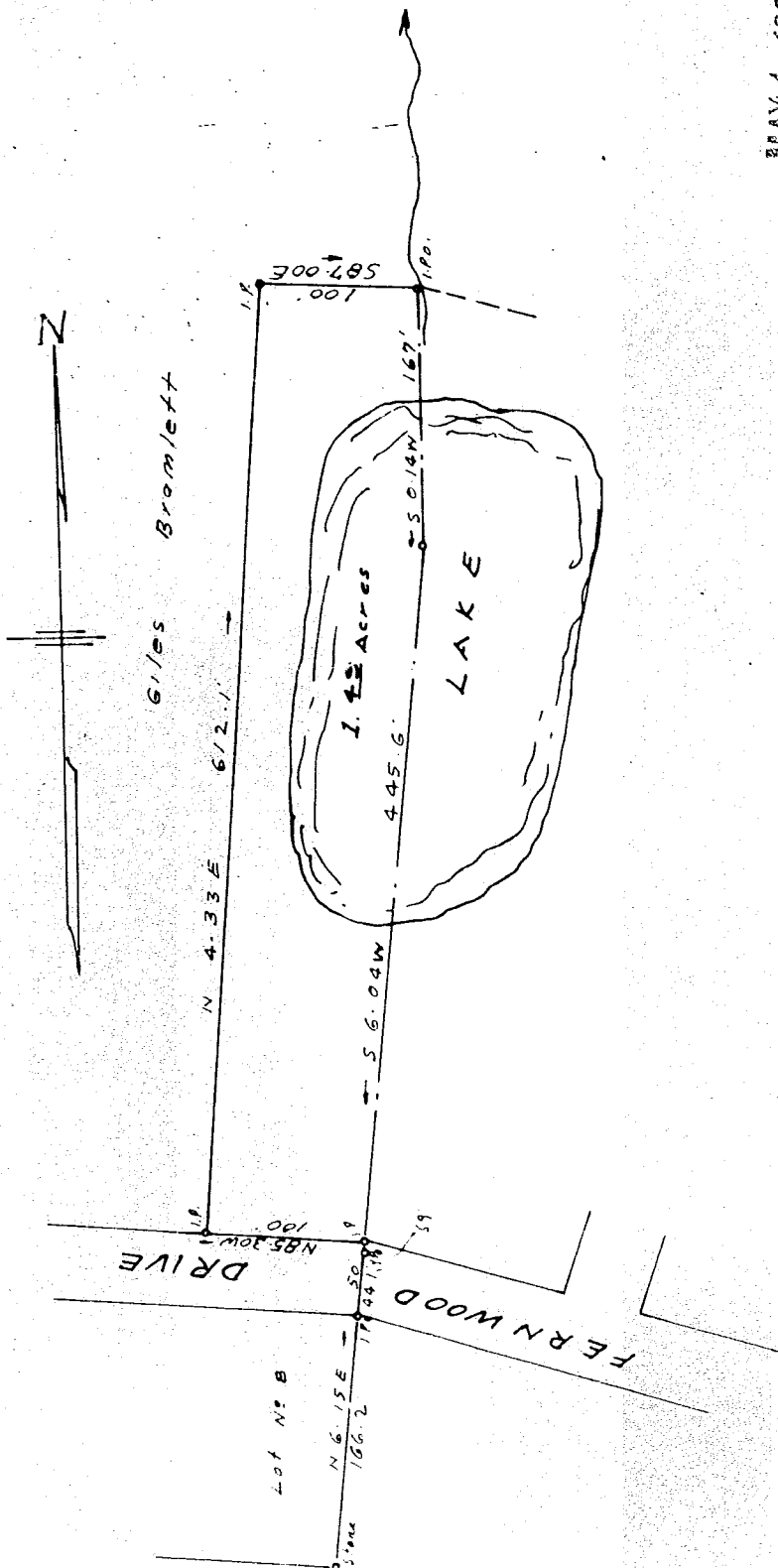


Recorded May 4, 1964 at 4:00 P. M. #31072



MAY 4 1964
31072

PROPERTY OF
JAS. T. HOLTZCLAW

NEAR GREER S. C.

APR. 21, 1964.

SCALE 1"=100'

Co. Riddle Ry. Co.

Note Solid lines surveyed by MS this date
Broken lines copied from plat of W. P. Jorison
Prepared by J. J. Bruce 9/18/63

Picture 1.0898-97